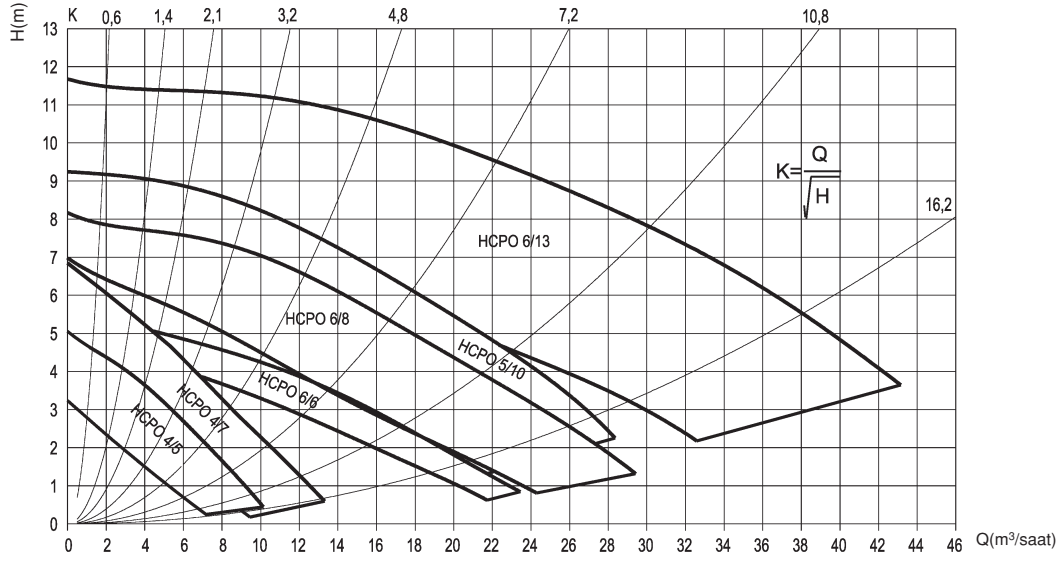
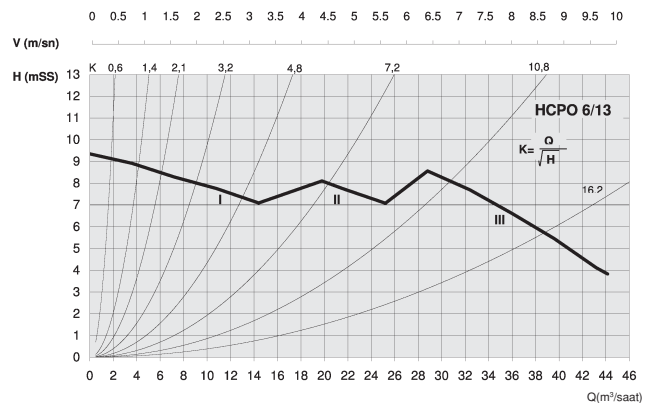
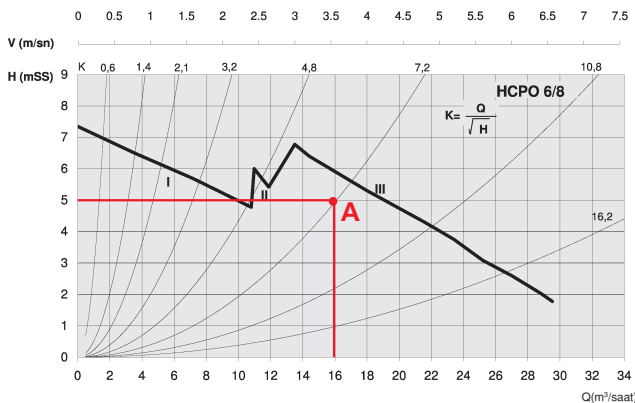
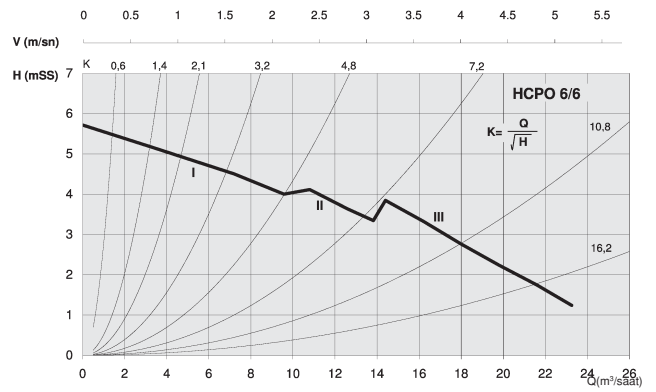
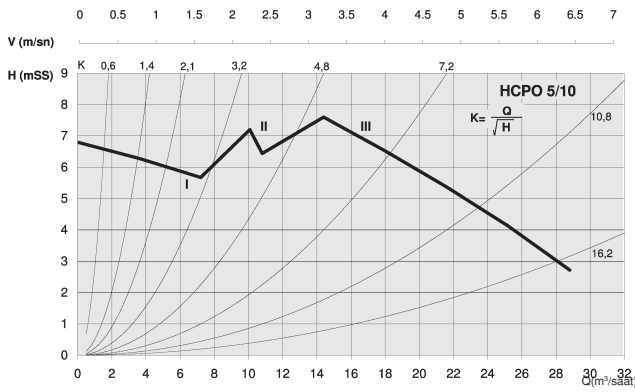
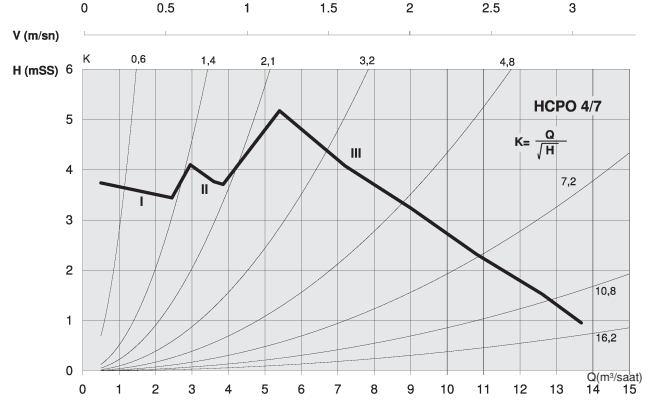
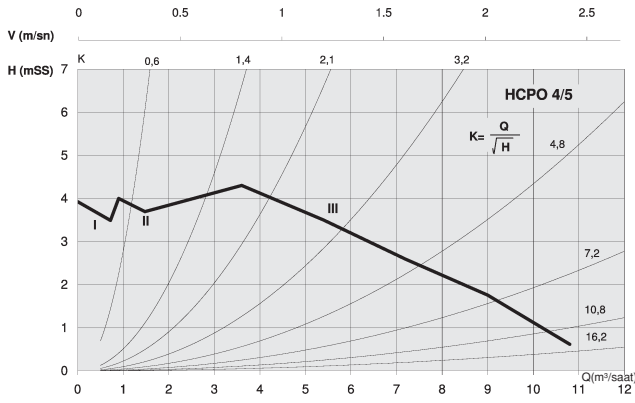




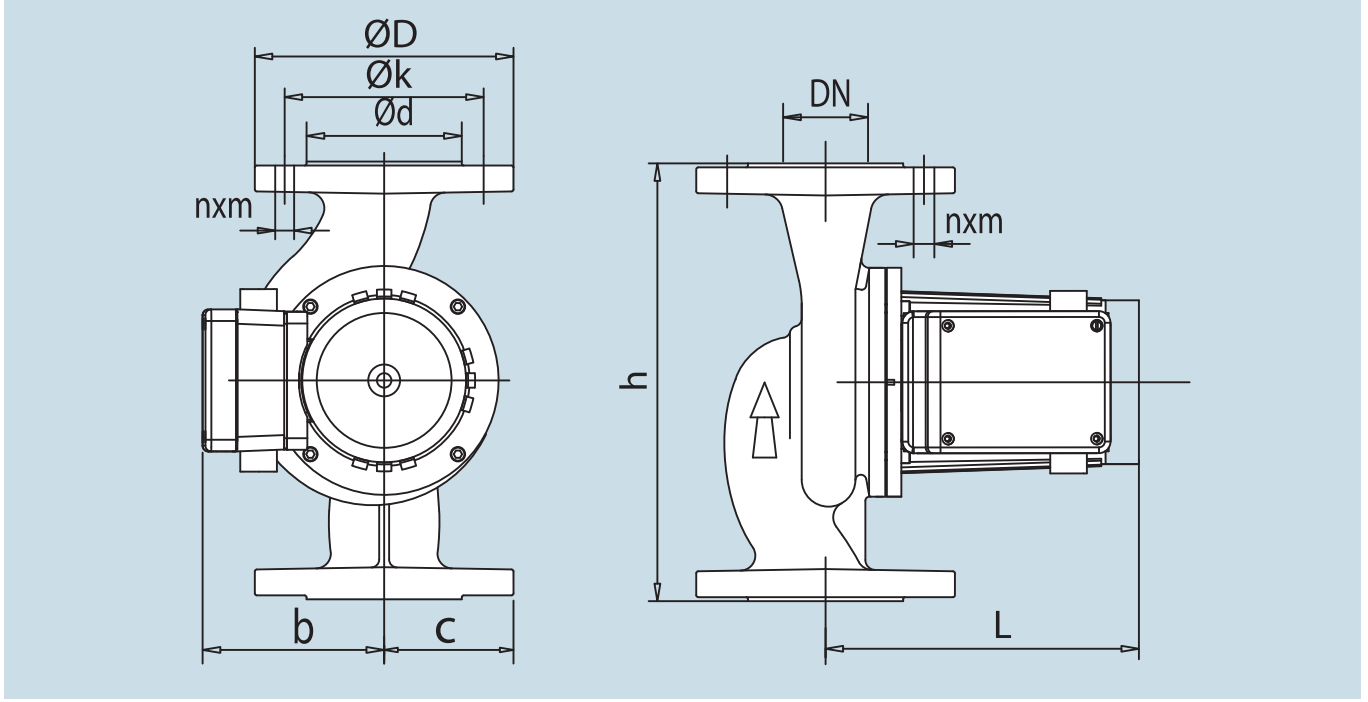
FLANŞLI, OTOMATİK KADEME KONTROLLÜ SİRKÜLASYON POMPALARI GENEL SEÇİM ABAĞI



FLANŞLI, OTOMATİK KADEME KONTROLLÜ SİRKÜLASYON POMPALARI BAĞIMSIZ KARAKTERİSTİK EĞRİLERİ



BORU BAĞLANTILARI VE BOYUTLAR



POMPA TİPİ	Ağırlık ~(kg)	ØD (mm)	Øk (mm)	Ød (mm)	DN	nxm	b (mm)	c (mm)	h (mm)	L (mm)	Hız Kade- mesi	Hız d/d	I(A) 380V 50Hz	I(A) 220V 50Hz	Motor Gücü Nominal (W)	Kondan- sator kapasite (µF)
HCPO 4/5	PN6	9	130	100	40	4x14	110,5	65	220	185	III	2430	0,48	-	215	-
											II	2070	0,24		120	
	PN10	10	150	110	88	4x18	I	1860	0,18	80						
HCPO 4/7	PN6	12,5	130	100	44	4x14	117,5	71	250	184	III	2260	0,63	-	326	-
								75			II	1950	0,36		200	
	PN10	14	150	110	88	4x18	I	1700	0,27	153						
HCPO 6/6	PN6	18	160	130	65	4x14	124,5	80	280	220,8	III	2900	0,86	-	352	-
								92,5			II	2820	0,51		290	
	PN10	19	185	145	112	4x18	I	2700	0,35	240						
HCPO 6/8	PN6	18	160	130	65	4x14	124,5	80	280	220,8	III	2820	1,07	-	560	-
								92,5			II	2680	0,73		430	
	PN10	22	185	145	112	4x18	I	2440	0,48	270						
HCPO 5/10	PN6	20	140	110	50	4x14	124,5	87	280	221,8	III	2670	1,37	-	750	-
											II	2390	0,98		580	
	PN10	22	165	125	99	4x19	I	2080	0,7	420						
HCPO 6/13	PN6	32,5	110	130	65	4x14	135,5	98,5	340	266,8	III	2740	2,4	-	1420	-
											II	2490	1,95		1200	
	PN10	35,5	118	145	67,5	4x19	I	2190	1,35	990						

Sirkülasyon pompalarının kondansatör voltajı 400 V olmalıdır.

SİPARİŞ NOTASYONU

Otomatik Kademe Kontrollü Sirkülasyon Pompaları İçin

HCPO 5 / 10

Maks. Basma
Yüksekliği (m)
Bağlantı Anma Çapı
Pompa Tipi

